



# *Ascenty*

A Digital Realty and Brookfield Infrastructure JV

---

# *SÃO PAULO CAMPUS*

# São Paulo Campus

The city of São Paulo is South America's largest financial and business hub. It is also a well-known hotspot for technological excellence and start-ups. If these factors alone are major draws, imagine being able to rely on the resources of the Latin America Leader in Data Center Infrastructure and Connectivity.

Now it's easy to understand why the Ascenty Data Center Campus in São Paulo is the top choice for domestic and international companies.



**Av. Roberto Pinto Sobrinho, 350 - Vila Menck, Osasco - SP, 06268-120**



## Certifications

To ensure the operational continuity of your business with the quality, reliability and uptime you need, Ascenty's expertise has been evaluated, recognized and certified by the industry's leading global certification bodies.



Tier III Design



Tier III Facility



TR3



Financial transactions



Physical security and processes



Services



Compliance Management



Environment



Anti Corruption



Energy Management



Information Security



Data Privacy



Health & Safety



Quality Management



Business Continuity



Carbon Neutral



Zero Landfill

\*This board contains all Ascenty certifications, not just the certifications for this site/campus.

**Ascenty**

A Digital Realty and Brookfield Infrastructure JV



## SÃO PAULO 1

**SP 1**

Since 2017



**6 MW**  
of total energy



**3,500 m<sup>2</sup>**  
total area



**480**  
racks



**Carrier  
Neutral**



## SÃO PAULO 2

**SP 2**

Since 2017



**14 MW**  
of total energy



**8,500 m<sup>2</sup>**  
total area



**1,500**  
racks



**Carrier  
Neutral**



## SÃO PAULO 3

SP 3

Since 2020



4 MW  
of total energy



4,000m<sup>2</sup>  
total area



800  
racks



Carrier  
Neutral e  
Novo NAP  
Brasil



## SÃO PAULO 4

SP 4

Since 2023



9 MW  
of total energy



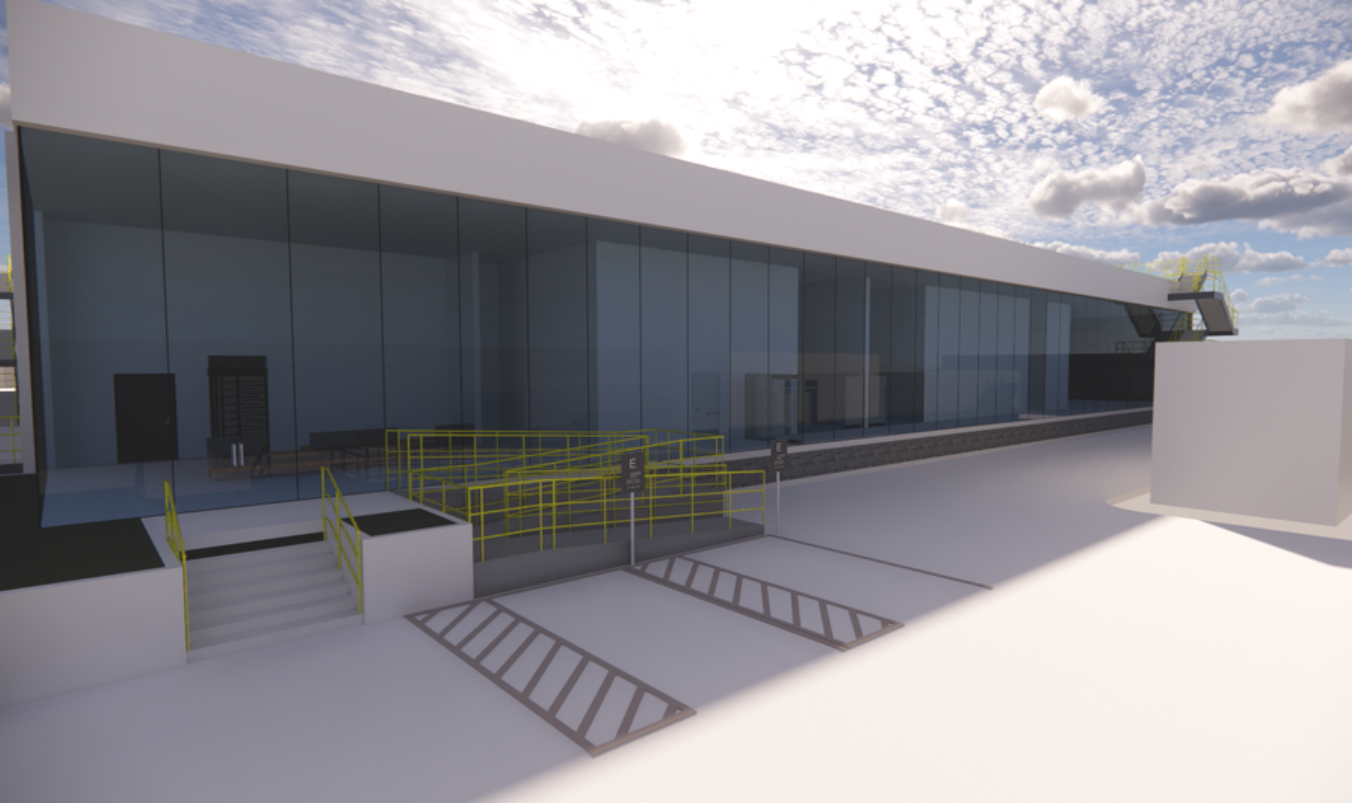
7,500 m<sup>2</sup>  
total area



900  
racks



Carrier  
Neutral



## SÃO PAULO 5

SP 5

*Under construction*



6 MW  
of total energy



7,000m<sup>2</sup>  
total area



1,500  
racks



Carrier  
Neutral



## SÃO PAULO 6

SP 6

*Under construction*



8 MW  
of total energy



7,000m<sup>2</sup>  
total area



2,000  
racks



Carrier  
Neutral

## + information on our Data Center

### CONNECTIVITY

- Carrier Neutral.
- Dedicated Telecom meet me rooms.
- PIX São Paulo and direct connection with PIX Campinas.

### SECURITY

- 24/7 Monitoring using CCTV cameras with high-definition automatic movement detection.
- Dual authentication for access control using biometric and magnetic cards.

### POWER

- Tri-bus redundancy system (three power lines servicing each data hall).
- Dual diesel fuel storage tanks with 48 hours of fuel autonomy without refueling.

### COOLING

- Isolated technical corridors for equipment maintenance.
- Dual coil cold water chiller system.



## NAP: an important node for content exchange

The São Paulo Campus has a unique advantage: it is home to Brazil's newest NAP (Network Access Point). The NAP provides customers with quick and easy access to top content from around the world. This is because it allows them to link up to all major domestic and international carriers, Internet Service Providers (ISPs) and public clouds.

## The benefits of NAP for enterprises

- 100% carrier-neutral data center infrastructure;
- Easy access to top global content;
- High performance and low latency;
- Easy access to all major domestic and international carriers;
- Interconnection with Ascenty ecosystem, no local POP required.



## Data Center Solutions

- ▶ Colocation
  - Racks
  - Cages
  - Área Dedicada
- ▶ Soluções Complementares
  - Smart Hands
  - Work Areas
  - Soluções de Implementação
  - Disaster Recovery

## Connectivity

- ▶ Internet
  - Banda IP
  - Link IP
  - Anti DDoS
- ▶ Interconexão
  - Cloud Exchange
  - Internet Exchange Point (IXPs)
  - Cross Connect
- ▶ Telecom
  - DWDM
  - MPLS
  - Lan to Lan
  - Fibra Apagada
  - Last Mile

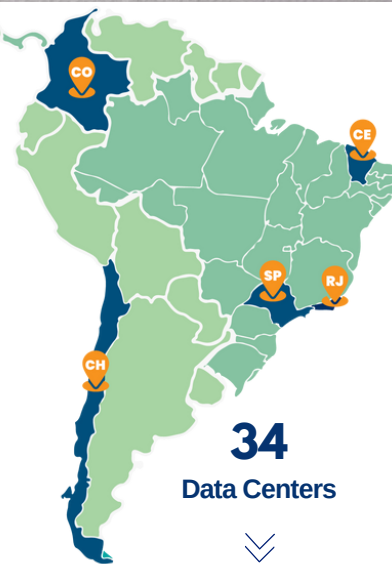
## Cloud Connect

- Microsoft ExpressRoute
- Amazon Direct Connect
- IBM Cloud
- Oracle FastConnect
- Google Cloud Interconnect

## About Ascenty

Ascenty, a Digital Realty and Brookfield company, is the largest connectivity and data center service provider in Latin America, currently managing 34 data centers in operation and/or construction in Brazil, Chile, México and Colômbia, interconnected by 5,000 km of proprietary fiber-optic network.

The company was established in 2010 and builds and operates world-class data centers serving the world's largest cloud and technology providers, as well as other customers in the finance, retail, industrial, healthcare and service industries. To support the company's expansion, Ascenty is backed by its shareholders which include Brookfield Infrastructure Partners, a Canadian asset management company and Digital Realty, the world's largest data centers provider with more than 300 data centers located in 06 continents, such as North America, Europe, Latin America, Asia, Africa and Australia.



**34**  
Data Centers

⇓

**4 countries**  
Brazil, Chile,  
México and  
Colômbia